

FRESNO UNIFIED SCHOOL DISTRICT
Summary Report of Suspension and Expulsion - End of School Year (August through June)

EDISON HIGH

On-Campus Suspension by Ethnicity

| | White | | | Hispanic | | | African American | | | Asian | | | Other | | | Overall | | | EL | | | Special Ed | | |
|-------------------------|-------|-------|-------|----------|-------|-------|------------------|-------|-------|-------|-------|-------|-------|-------|-------|---------|-------|-------|-------|-------|-------|------------|-------|-------|
| | 14/15 | 15/16 | 16/17 | 14/15 | 15/16 | 16/17 | 14/15 | 15/16 | 16/17 | 14/15 | 15/16 | 16/17 | 14/15 | 15/16 | 16/17 | 14/15 | 15/16 | 16/17 | 14/15 | 15/16 | 16/17 | 14/15 | 15/16 | 16/17 |
| Enrollment | 220 | 238 | 253 | 1395 | 1468 | 1538 | 396 | 388 | 374 | 265 | 256 | 244 | 63 | 74 | 79 | 2339 | 2424 | 2488 | 214 | 233 | 243 | 139 | 155 | 154 |
| # Students | | | | 19 | 3 | 3 | 21 | 6 | 5 | | | | 1 | 1 | | 41 | 10 | 8 | 4 | 1 | 1 | 7 | 1 | 1 |
| # Incidents | | | | 23 | 2 | 3 | 25 | 6 | 5 | | | | 1 | 1 | | 49 | 9 | 8 | 4 | 1 | 1 | 8 | 1 | 1 |
| # Students 5+** | | | | | | | | | | | | | | | | | | | | | | | | |
| # Incidents 5+** | | | | | | | | | | | | | | | | | | | | | | | | |
| Total Days | | | | 39 | 6 | 6 | 38 | 11 | 8 | | | | 1 | 1 | | 78 | 18 | 14 | 5 | 2 | 2 | 10 | 2 | 2 |
| IPHS*** | | | | 1.6 | 0.1 | 0.2 | 6.3 | 1.5 | 1.3 | | | | 1.6 | 1.4 | | 2.1 | 0.4 | 0.3 | 1.9 | 0.4 | 0.4 | 5.8 | 0.6 | 0.6 |

*Note: Data as of EOY for all school years.

**# of Incidents with 5 or more days of Suspension

***Incidents Per Hundred Students

Ed Code Violations

| | A | B | C | D | E | F | G | H | I | J | K | L | M | N | O | P | Q | R | T | Z | 2 | 3 | 4 | 7 |
|------------------|---|---|---|---|---|---|---|---|----|---|----|---|---|---|---|---|---|---|---|---|---|---|---|---|
| 2014-2015 | 1 | 1 | 1 | 0 | 0 | 0 | 1 | 0 | 11 | 0 | 34 | 0 | 0 | 0 | 0 | 0 | 0 | 0 | 0 | 0 | 0 | 0 | 0 | 0 |
| 2015-2016 | 0 | 0 | 0 | 0 | 0 | 2 | 0 | 0 | 0 | 0 | 8 | 0 | 0 | 0 | 0 | 0 | 0 | 0 | 0 | 0 | 0 | 0 | 0 | 0 |
| 2016-2017 | 0 | 0 | 0 | 0 | 0 | 0 | 3 | 0 | 0 | 0 | 5 | 0 | 0 | 0 | 0 | 0 | 0 | 0 | 0 | 0 | 0 | 0 | 0 | 0 |

*Note: Each suspension occurrence can account for multiple Ed Code violations.

| | | | | | | | |
|---|--|---|--------------------------|---|----------------------------|---|---------------------------------|
| A | Injury to Person | G | Stolen Property | M | Simulated Weapon | T | Aid or Abet an Injury to Person |
| B | Weapon or Dangerous Object | H | Tobacco | N | Sexual Assault or Battery | Z | Wilful Violence |
| C | Possession of Intoxicating or Controlled Substance | I | Obscene Act or Profanity | O | Harassed a Witness | 2 | Sexual Harassment |
| D | Distribution of Intoxicating or Controlled Substance | J | Drug Paraphernalia | P | Distribution of SOMA | 3 | Hate Violence |
| E | Robbery or Extortion | K | Defiance or Disruption | Q | Hazing or Attempted Hazing | 4 | Non-sexual Harassment |
| F | Damage to Property | L | Receive Stolen Property | R | Engaged in Bullying | 7 | Terroristic Threats |

FRESNO UNIFIED SCHOOL DISTRICT
Summary Report of Suspension and Expulsion - End of School Year (August through June)

EDISON HIGH

Suspension by Ethnicity

| | White | | | Hispanic | | | African American | | | Asian | | | Other | | | Overall | | | EL | | | Special Ed | | |
|-------------------------|-------|-------|-------|----------|-------|-------|------------------|-------|-------|-------|-------|-------|-------|-------|-------|---------|-------|-------|-------|-------|-------|------------|-------|-------|
| | 14/15 | 15/16 | 16/17 | 14/15 | 15/16 | 16/17 | 14/15 | 15/16 | 16/17 | 14/15 | 15/16 | 16/17 | 14/15 | 15/16 | 16/17 | 14/15 | 15/16 | 16/17 | 14/15 | 15/16 | 16/17 | 14/15 | 15/16 | 16/17 |
| Enrollment | 220 | 238 | 253 | 1395 | 1468 | 1538 | 396 | 388 | 374 | 265 | 256 | 244 | 63 | 74 | 79 | 2339 | 2424 | 2488 | 214 | 233 | 243 | 139 | 155 | 154 |
| # Students | 1 | 3 | 7 | 51 | 56 | 86 | 62 | 79 | 40 | 1 | | 5 | 2 | 10 | 1 | 117 | 148 | 139 | 20 | 17 | 41 | 26 | 32 | 35 |
| # Incidents | 1 | 3 | 12 | 66 | 79 | 95 | 84 | 108 | 50 | 1 | | 7 | 3 | 12 | 1 | 154 | 196 | 156 | 25 | 29 | 52 | 41 | 63 | 56 |
| # Students 5+** | | | 2 | 6 | 13 | 15 | 15 | 23 | 7 | | | 2 | | | | 21 | 36 | 26 | 2 | 6 | 8 | 6 | 8 | 7 |
| # Incidents 5+** | | | 2 | 7 | 12 | 13 | 16 | 21 | 7 | | | 2 | | | | 23 | 32 | 24 | 2 | 6 | 8 | 6 | 8 | 7 |
| Total Days | 1 | 6 | 26 | 151 | 218 | 275 | 213 | 323 | 128 | 0 | | 19 | 5 | 28 | 3 | 370 | 575 | 451 | 58 | 74 | 129 | 101 | 149 | 137 |
| IPHS*** | 0.5 | 1.3 | 4.7 | 4.7 | 5.4 | 6.2 | 21.2 | 27.8 | 13.4 | 0.4 | | 2.9 | 4.8 | 16.2 | 1.3 | 6.6 | 8.1 | 6.3 | 11.7 | 12.4 | 21.4 | 29.5 | 40.6 | 36.4 |

*Note: Data as of EOY for all school years.

**# of Incidents with 5 or more days of Suspension

***Incidents Per Hundred Students

Ed Code Violations

| | A | B | C | D | E | F | G | H | I | J | K | L | M | N | O | P | Q | R | T | Z | 2 | 3 | 4 | 7 |
|------------------|-----|---|----|---|---|---|---|---|----|---|----|---|---|---|---|---|---|---|---|----|---|---|---|---|
| 2014-2015 | 97 | 3 | 25 | 0 | 0 | 1 | 3 | 1 | 17 | 0 | 11 | 2 | 2 | 0 | 1 | 0 | 0 | 5 | 1 | 23 | 1 | 0 | 3 | 0 |
| 2015-2016 | 134 | 4 | 19 | 0 | 5 | 8 | 6 | 5 | 15 | 4 | 22 | 1 | 1 | 1 | 0 | 0 | 0 | 5 | 0 | 45 | 1 | 0 | 6 | 1 |
| 2016-2017 | 88 | 9 | 46 | 0 | 1 | 4 | 7 | 1 | 21 | 0 | 28 | 1 | 0 | 1 | 0 | 0 | 0 | 1 | 0 | 15 | 1 | 0 | 4 | 1 |

*Note: Each suspension occurrence can account for multiple Ed Code violations.

| | | | | | | | |
|---|--|---|--------------------------|---|----------------------------|---|---------------------------------|
| A | Injury to Person | G | Stolen Property | M | Simulated Weapon | T | Aid or Abet an Injury to Person |
| B | Weapon or Dangerous Object | H | Tobacco | N | Sexual Assault or Battery | Z | Wilful Violence |
| C | Possession of Intoxicating or Controlled Substance | I | Obscene Act or Profanity | O | Harassed a Witness | 2 | Sexual Harassment |
| D | Distribution of Intoxicating or Controlled Substance | J | Drug Paraphernalia | P | Distribution of SOMA | 3 | Hate Violence |
| E | Robbery or Extortion | K | Defiance or Disruption | Q | Hazing or Attempted Hazing | 4 | Non-sexual Harassment |
| F | Damage to Property | L | Receive Stolen Property | R | Engaged in Bullying | 7 | Terroristic Threats |

FRESNO UNIFIED SCHOOL DISTRICT
Summary Report of Suspension and Expulsion - End of School Year (August through June)

EDISON HIGH

Expulsion by Ethnicity

| | White | | | Hispanic | | | African American | | | Asian | | | Other | | | Overall | | | EL | | | Special Ed | | |
|-------------------------|-------|-------|-------|----------|-------|-------|------------------|-------|-------|-------|-------|-------|-------|-------|-------|---------|-------|-------|-------|-------|-------|------------|-------|-------|
| | 14/15 | 15/16 | 16/17 | 14/15 | 15/16 | 16/17 | 14/15 | 15/16 | 16/17 | 14/15 | 15/16 | 16/17 | 14/15 | 15/16 | 16/17 | 14/15 | 15/16 | 16/17 | 14/15 | 15/16 | 16/17 | 14/15 | 15/16 | 16/17 |
| Enrollment | 220 | 238 | 253 | 1395 | 1468 | 1538 | 396 | 396 | 374 | 265 | 256 | 244 | 63 | 74 | 79 | 2339 | 2424 | 2488 | 214 | 233 | 243 | 139 | 155 | 154 |
| # Exp. Referrals | | | 1 | 1 | | 5 | 1 | 1 | 3 | | | | | | | 2 | 5 | 9 | 1 | | 1 | | | 2 |
| # Exp. Incidents | | | | 1 | | 4 | 1 | 1 | 3 | | | | | | | 2 | 2 | 7 | 1 | | 1 | | | |
| # Stu. Expelled | | | | 1 | | 4 | 1 | 1 | 3 | | | | | | | 2 | 2 | 7 | 1 | | 1 | | | |
| EPHS** | | | | 0 | | 0 | 0 | 0 | 0 | | | | | | | 0 | 0 | 0 | 0 | | 0 | | | |

*Note: Data as of EOY for all school years.

**Expulsions Per Hundred Students

Ed Code Violations

| | A | B | C | D | E | F | G | H | I | J | K | L | M | N | O | P | Q | R | T | Z | 2 | 3 | 4 | 7 |
|------------------|---|---|---|---|---|---|---|---|---|---|---|---|---|---|---|---|---|---|---|---|---|---|---|---|
| 2014-2015 | 2 | 0 | 0 | 0 | 0 | 0 | 0 | 0 | 0 | 0 | 2 | 0 | 0 | 0 | 0 | 0 | 0 | 0 | 1 | 2 | 0 | 0 | 0 | 0 |
| 2015-2016 | 1 | 0 | 1 | 0 | 0 | 0 | 0 | 0 | 0 | 0 | 0 | 0 | 0 | 0 | 0 | 0 | 0 | 0 | 0 | 1 | 0 | 0 | 0 | 0 |
| 2016-2017 | 5 | 2 | 2 | 0 | 0 | 0 | 0 | 0 | 0 | 0 | 1 | 0 | 0 | 0 | 0 | 0 | 0 | 0 | 0 | 3 | 0 | 0 | 1 | 1 |

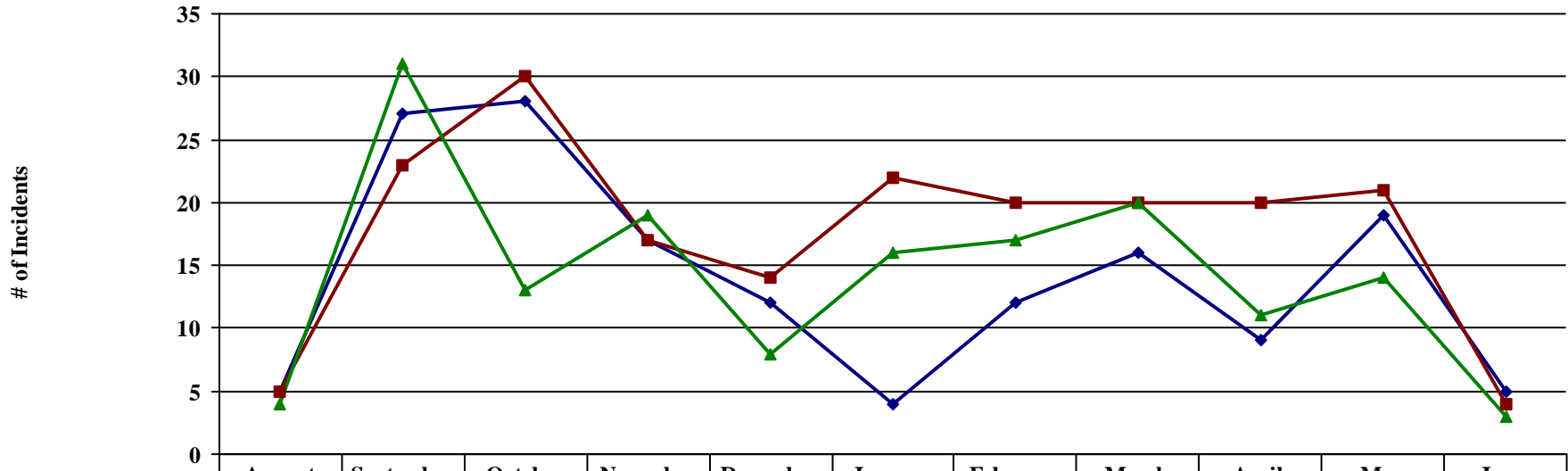
*Note: Each suspension occurrence can account for multiple Ed Code violations.

| | | | | | | | |
|---|--|---|--------------------------|---|----------------------------|---|---------------------------------|
| A | Injury to Person | G | Stolen Property | M | Simulated Weapon | T | Aid or Abet an Injury to Person |
| B | Weapon or Dangerous Object | H | Tobacco | N | Sexual Assault or Battery | Z | Wilful Violence |
| C | Possession of Intoxicating or Controlled Substance | I | Obscene Act or Profanity | O | Harassed a Witness | 2 | Sexual Harassment |
| D | Distribution of Intoxicating or Controlled Substance | J | Drug Paraphernalia | P | Distribution of SOMA | 3 | Hate Violence |
| E | Robbery or Extortion | K | Defiance or Disruption | Q | Hazing or Attempted Hazing | 4 | Non-sexual Harassment |
| F | Damage to Property | L | Receive Stolen Property | R | Engaged in Bullying | 7 | Terroristic Threats |

FRESNO UNIFIED SCHOOL DISTRICT
 Summary Report of Suspension and Expulsion - End of School Year (August through June)

EDISON HIGH

Suspensions by Month



| | August | September | October | November | December | January | February | March | April | May | June |
|-------------|--------|-----------|---------|----------|----------|---------|----------|-------|-------|-----|------|
| ◆ 2014-2015 | 5 | 27 | 28 | 17 | 12 | 4 | 12 | 16 | 9 | 19 | 5 |
| ■ 2015-2016 | 5 | 23 | 30 | 17 | 14 | 22 | 20 | 20 | 20 | 21 | 4 |
| ▲ 2016-2017 | 4 | 31 | 13 | 19 | 8 | 16 | 17 | 20 | 11 | 14 | 3 |

◆ 2014-2015 ■ 2015-2016 ▲ 2016-2017